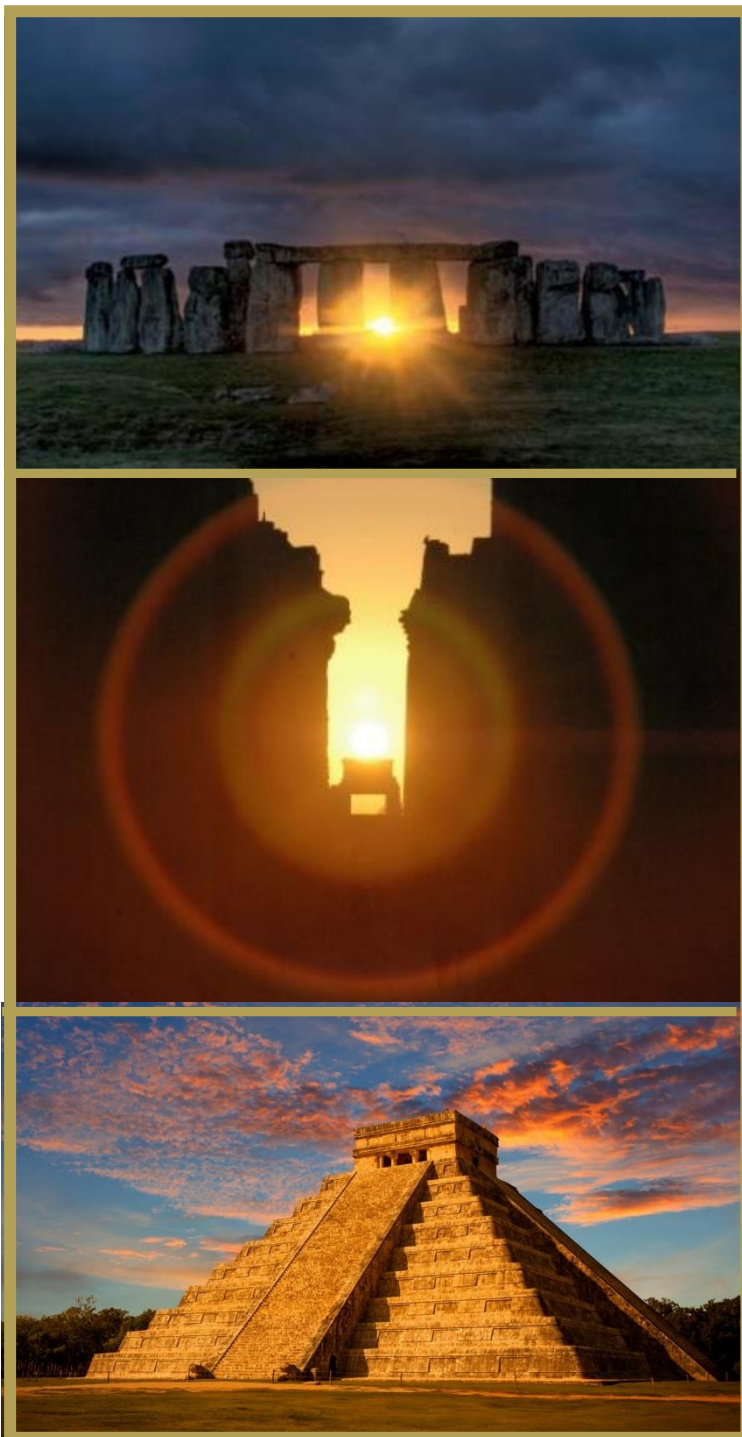


The Solstice

Stillness and Renewal



In the end the Shadow was only a small and passing thing: there was Light and high Beauty for ever beyond its reach.

J.R.R. Tolkien



On Earth the Solstices are pivotal points in our seasonal calendar, but from a Cosmic awareness, the Solstice is a time to remember and to reaffirm our Oneness with the Life Force - the Universal Field.

Twice a year, every year, without fail, without any deviation or delay, we are given a close up, a down to earth, realisation of the beauty and impeccability of our journey through Time and Space and our role within this unfolding journey.

At the time of the Solstices, whether Winter, or Summer, there is a pause as the Sun appears to stand still in the Heavens as we enter the time of the Longest Night or the Longest Day.

In the Northern Hemisphere it is the marking of the Return of Light, from the Darkness, for from this point forward, the days will lengthen bringing the promise of outer renewal, as Nature, and the Devic Elemental Kingdoms, once again, deep within the soil, begin to unfold their Cosmic imprint of shoot, bud, leaf and flower over the coming weeks.

For those in the Southern Hemisphere, at this point of Greatest Light and Longest Day, a time for gratitude for the visible abundance and bounteousness of Life that supports and energises such a diverse, varied, beautiful and miraculous Natural world, whilst knowing that it too will return in cyclic rhythm back into the darkness for renewal.

Wherever we are in the world it is a time for reflection. A time for inner stillness, deep awareness and appreciation of this constant, rhythmic cycle of inner renewal and rebirth.

This cyclic, in and out breathing of the Cosmos, displayed in Nature and by the Light that flows onto the Earth, at the Solstices, was revered by our ancestors who physically marked out these times, by anchoring and witnessing Light infusing Matter, reaffirming their deep connection to the Life Force and the Cosmos.

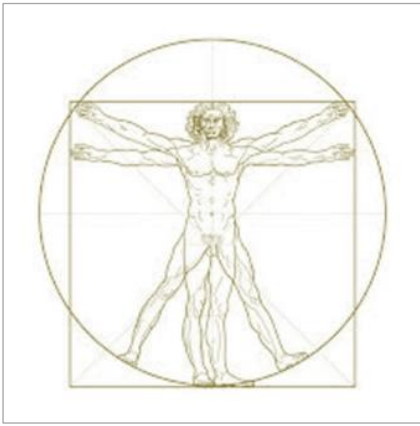
The ancient buildings of Stonehenge in England, the Temple of Karnack in Luxor Egypt, and Chichen Itza in Mexico, along with the Sun Temple at Machu Picchu were constructed to honour our innate and deep connection with the Cosmos, as the Light from the Sun, at the time of the Winter and Summer Solstices streams down onto the Earth and, as then, still now, onto the altars that were aligned to these moments in time. The Ancient Wisdom teachings of the past did not separate us from the truth of our Universal Being.



In the teachings of Indian scriptures, and many other cultures, children were taught, that they were a part of the Cosmos, that they were composed of all of the elements of Fire Earth Air and Water and also the subtlest of elements, Ether, the Source that flows in, through and around all Life within the Universe. In the constancy of the Cosmos nothing has changed, for we are the Beings that encompass both the Matter and the Light – the inner and outer – One with Nature and Universal Consciousness.

At this point in time on Mother Earth, with all of the distraction, discord and division, this expanded understanding of our Unified Consciousness, with All That Is, beyond the limited identity of personality and nationality, is needed more than ever.

For in observing and witnessing the seasonal renewal and rebirth of Light unfolding each year at the Solstices, through the Elemental Kingdoms, we too can come to naturally comprehend and understand that there is no such thing as death, the physical body may fade but Essence is Infinite.



For the Consciousness, the Life Force, the Spirit within Matter is Eternal - knowing this Truth – memory arises and ease enfolds every cell of our Being. In this deeply relaxed state, ease becomes the foundation for Reunion, Peace, Regeneration and Spiritual Awakening.

So how synchronous that each year, the Sun at the time of the December Solstice at 0° of Capricorn, reflects this timeless Truth back to us, for 0° Capricorn is on Gene Key 10 known as **Being at Ease** moving through the Shadow of **Self-Obsession** to the Gift of **Naturalness** to the **Siddhi** of **Being**.

'Self-obsession is driven by fear – it is a specific unconscious fear - the fear of losing your identity.'

'The life of every individual human being is a journey through the frequencies of this 10th Gene Key. The Gift of Naturalness cannot be practiced and copied it can only emerge through a rising sense of inner freedom and spaciousness. Naturalness unfolds through stages and the final flowering of your inner Being manifests as a challenge to the current norm, since your true nature is always found at the cutting edge of evolution.'

'The 10th Siddhi is a truly beautiful expression of consciousness coming through the human form.'

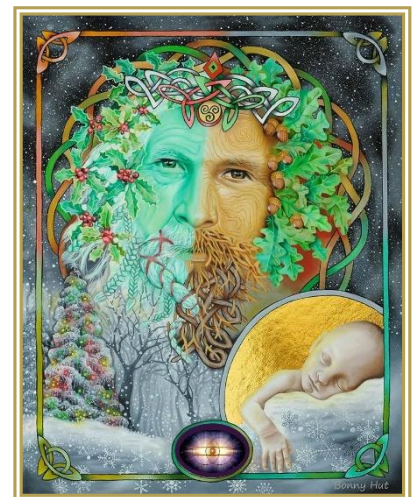
'Being is the nature of Consciousness in form and it has no agenda or direction. It simply is. In that simple statement lies a power beyond all comprehension and it establishes the 10th Siddhi as the sleeping giant within the human genome. Nothing has more power than Being itself.'

'We would each do well to remember the nature of Being that rests behind all the dramas of the world and our individual lives. To rest unattached in the supreme state of Being whilst at the same time participating in the adventure of our evolution is quite possibly the greatest task that the humans of the future will have to master.'

At this time, the Earth is in the opposite part of the sky at 0° Cancer on Gene Key 15 known as **An Eternally Flowering Spring** moving through the Shadow of **Dullness** to the Gift of **Magnetism** to the Siddhi of **Florescence**

'The 15th Gene Key is such a powerful portal into life's mysteries. It is one of the Gene Keys that bridges humans with other life forms and in doing so it connects us profoundly to the living Spirit of Nature or Gaia. The Gift of Magnetism makes a person physically glow with Life force - it is a Gift filled with enthusiasm and openness and Love. Trusting the natural ebb and flow of life's currents, the people embodying the Gift live closely with the Earth's natural rhythm and experience the wisdom and clarity of slowing down.'

'Florescence is a state that occurs to humans sporadically, no one can predict if or when it will occur to a particular person. However, when it does arise that person is surrounded by light, magic and a tangibly magnetic aura.'



'Florescence is the ultimate flowering of your Higher Self. Florescence depends upon nothing. It cannot be created - not by meditation, good karma or by any form of effort, not even by effortlessness. Florescence is Grace. As this awakening moves through humanity and nature, we will experience powerful, subtle Earth changes – for the 15th Siddhi is aligning us with a higher evolution. Gaia contains subtle kingdoms of a far higher frequency than humanity – and these Devic Kingdoms are also preparing to take a leap in consciousness by merging with human consciousness.'



'The greatest Florescence will occur when hidden higher forces latent within the Earth rise to the surface and merge with human consciousness. Florescence is a mirror of the supernovae we see in the heavens above, but it is a supernova that takes place deep within the structure of form itself.

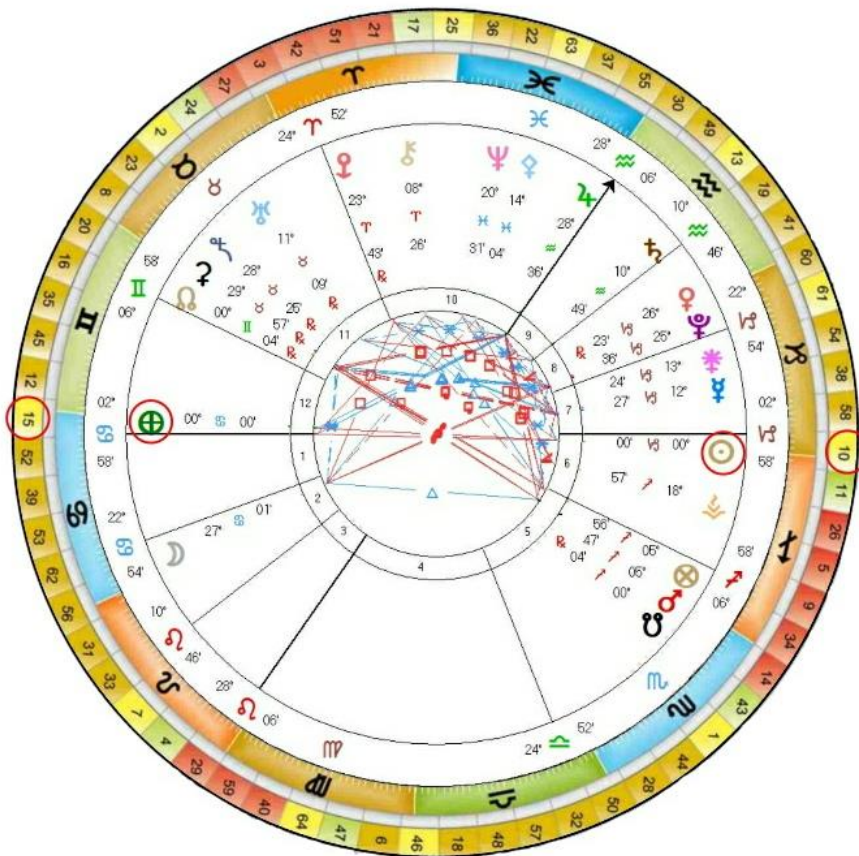
When you come into perfect alignment with Gaia, then, in the words of Christ, you mystically "Inherit the Earth".'

It is in the harmonising of the Divine Magnetic Love impulse with the Divine Electronic Light of Consciousness that we become the Bridge for this Inheritance. As we honour the Light within all Life and walk upon Mother Gaia with Open Hearts we enter into a Sacred Remembrance of the Truth of our Being.

May this Solstice and Christ Mass usher in deep Peace Joy and Gratitude for the Divine Light and Love that sustain us All.

All Blessings

Chart for the December Solstice



21.12.2021 16:00 GMT London UK
<https://www.timeanddate.com/worldclock/>